

**ON THE DAMAEID MITE FAUNA (ACARIFORMES:
ORIBATEI: DAMAEIDAE) OF CENTRAL ASIA. GENUS
BELBA HEYDEN, 1826. II. DESCRIPTION OF TWO
NEW SPECIES**

**К ФАУНЕ БУЛАВОНОГИХ КЛЕЩЕЙ (ACARIFORMES:
ORIBATEI: DAMAEIDAE) СРЕДНЕЙ АЗИИ. РОД
BELBA HEYDEN, 1826. II. ОПИСАНИЕ ДВУХ НОВЫХ
ВИДОВ**

**A.V.Tolstikov
А.В.Толстикова**

Department of Entomology, Faculty of Biology, Moscow Lomonosov
State University, Moscow, 119899 RUSSIA
Московский госуниверситет им.М.В.Ломоносова, Биологи-
ческий факультет, кафедра энтомологии, Москва, 119899,
Россия

Key words: *Belba*, Damaeidae, Middle Asian soil mites
Ключевые слова: *Belba*, Damaeidae, почвенные клещи Сред-
ней Азии

ABSTRACT

The paper continues discussion on the Central Asian damaged mite fauna. Two new species *B. flammeisetosa* sp.n. and *B. sarvari* sp.n. are described from southern Uzbekistan and Tadjikistan.

РЕЗЮМЕ

Статья продолжает обсуждение фауны булавоногих клещей Средней Азии. Иллюстрированное описание двух новых видов р. *Belba* (*B. flammeisetosa* sp.n., *B. sarvari* sp.n.) из Южного Узбекистана и Таджикистана.

In the course of inventory work dealing with the collections of oribatid mites from Central Asia, two new species of the genus *Belba* were discovered.

B. flammeisetosa has been found in E.M. Bulanova-Zakhvatkina's collection at the Institute for Animal Systematics and Ecology SO RAN

A.V.Tolstikov

Zoological Museum, Novosibirsk (L.G.Grishina), in S.Sharipov's collection donated to Dr. A.A. Lyashchev, and in the collections deposited at the Institute for Problems of Ecology and Evolution RAN, Moscow (D.A.Krivolutsky).

Belba flammeisetosa sp.n.

Figs. 1—7.

DIMENSIONS. All measurements are given in micrometers. Mean total ventral length of 10 females 466 (range 460—469), mean total maximum notogastral breadth 329 (319—338). That of 10 males: length 461 (455—465), breadth 311 (308—323).

INTEGUMENT. The color light-brown. Body, legs, and leg setae (except distal part of tarsi) are completely covered with dense, mostly filamentous cerotegument.

PRODORSUM. Width at level of acetabulum II 0.55 notogastral width. Only tubercles *Da* present, subtriangular. Propodolateral apophysis present, horn-like. Setae *rv* (42) and *le* (56) thin, smooth, curved; *in* long (116), attenuate, smooth; *ex* long (46), thin, attenuate, smooth. Sensillus long (125), attenuate.

NOTOGASTER. Slightly ovate viewed perpendicular to circumgastric suture, about 1.1 times longer than wide; exuvial scalps carried occasionally with adherent debris. Notogastral setae very unusual, unique for the genus, resembling painter brush or flame, having short stalk and flame-like thickening with short barbs. Two types of notogaster setae present: c_1 , c_2 , and h_1 2 times longer than the remainder (43 and 21, respectively) (that is clearly seen in lateral aspect). c_1 and c_2 directed anteriorly, l and h — series radiating. Mutual distance of pair c_2 3.2 times that of c_1 . Pseudoanal setae setiform, attenuate, smooth.

VENTRAL REGION. Tubercles *Va* and *Vp* (bearing setae *3b*) evenly rounded. Parastigmatic enantiophyses well developed. Sejugal apophyses: *sa* long, horn-like, *sp* evenly rounded. Coxisternal setation 3—1—3—4. Ventral setae smooth.

GNATHOSOMA. Normal for the genus.

LEGS. Relative length (I to IV): 1 : 0.8 : 0.9 : 1.4—1.5. Leg IV 1.05 ventral body length. Femur IV 1.2 times length trochanter IV. Proximal stalk of femur

Measurements of leg segments:

	I	II	III	IV
Tr			58	93
Fe	132	103	91	132
Ge	49	42	42	40
Ti	60	55	66	97
Ta	150	129	143	177

Damaeid Mite Fauna

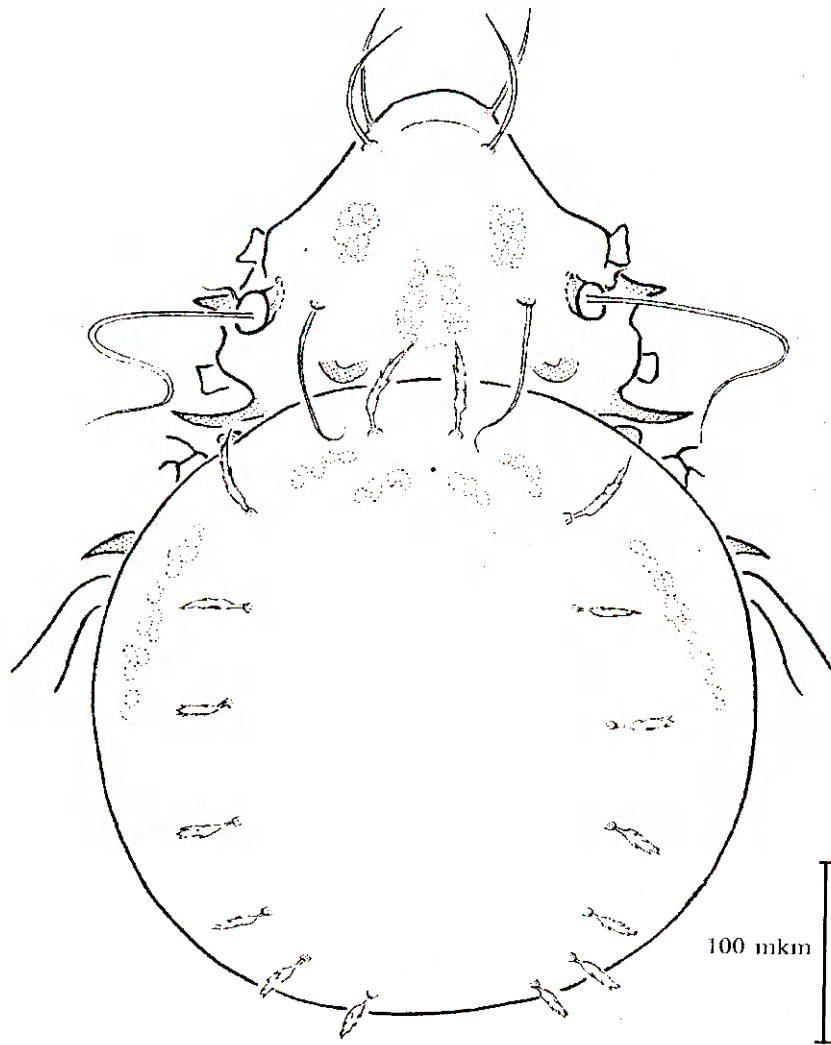


Fig.1. *Belba flammeisetosa*. Dorsal aspect.
Рис.1. *Belba flammeisetosa*. Вид сверху.

A.V.Tolstikov

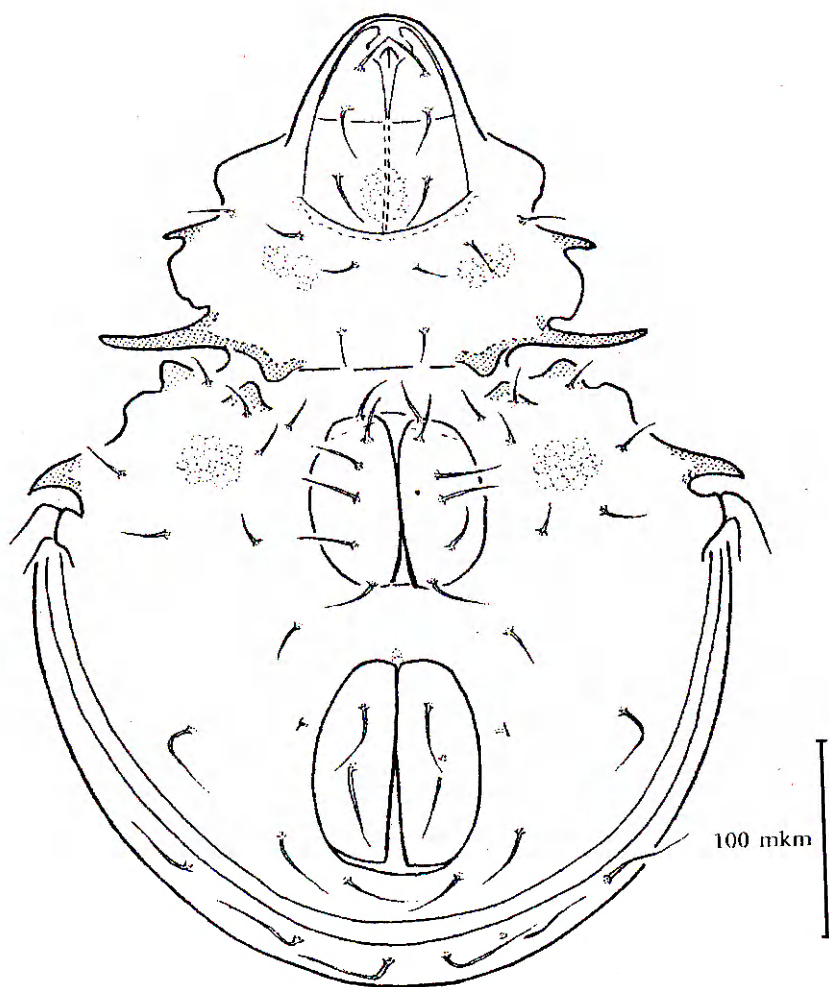


Fig.2. *Belba flammeisetosa*. Ventral aspect.
Рис.2. *Belba flammeisetosa*. Вид снизу.

Damaeid Mite Fauna

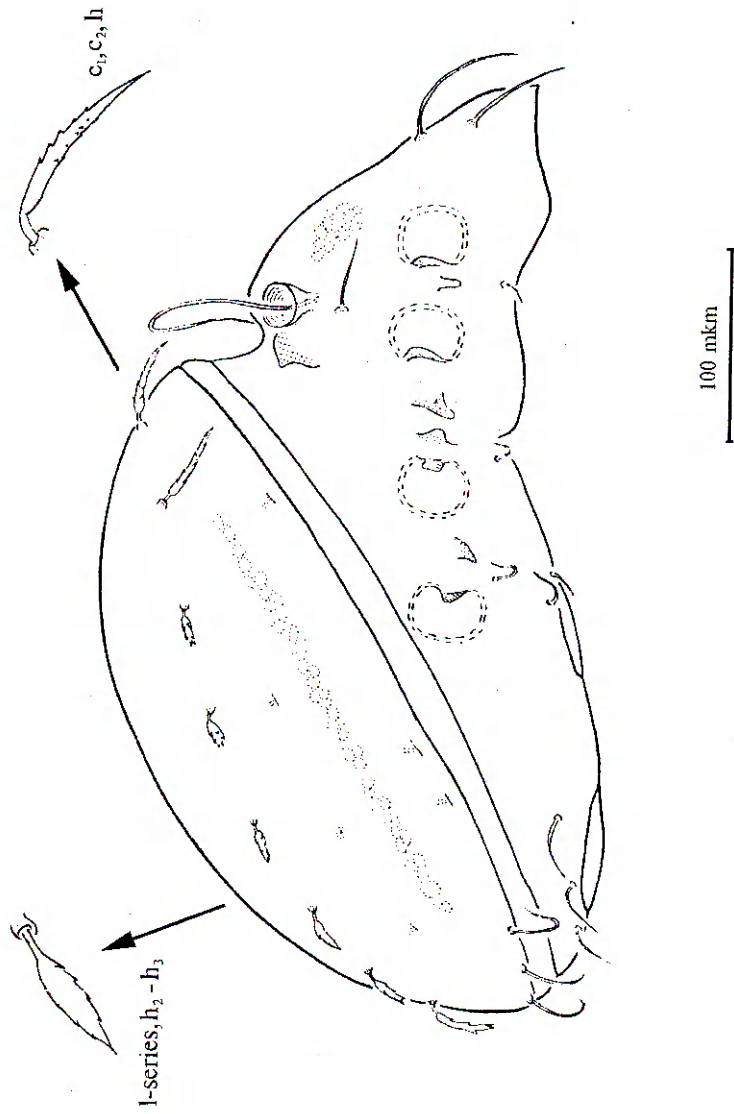


Fig.3. *Belba flammeisetosa*. Lateral aspect.
Рис.3. *Belba flammeisetosa*. Вид сбоку.

A.V.Tolstikov

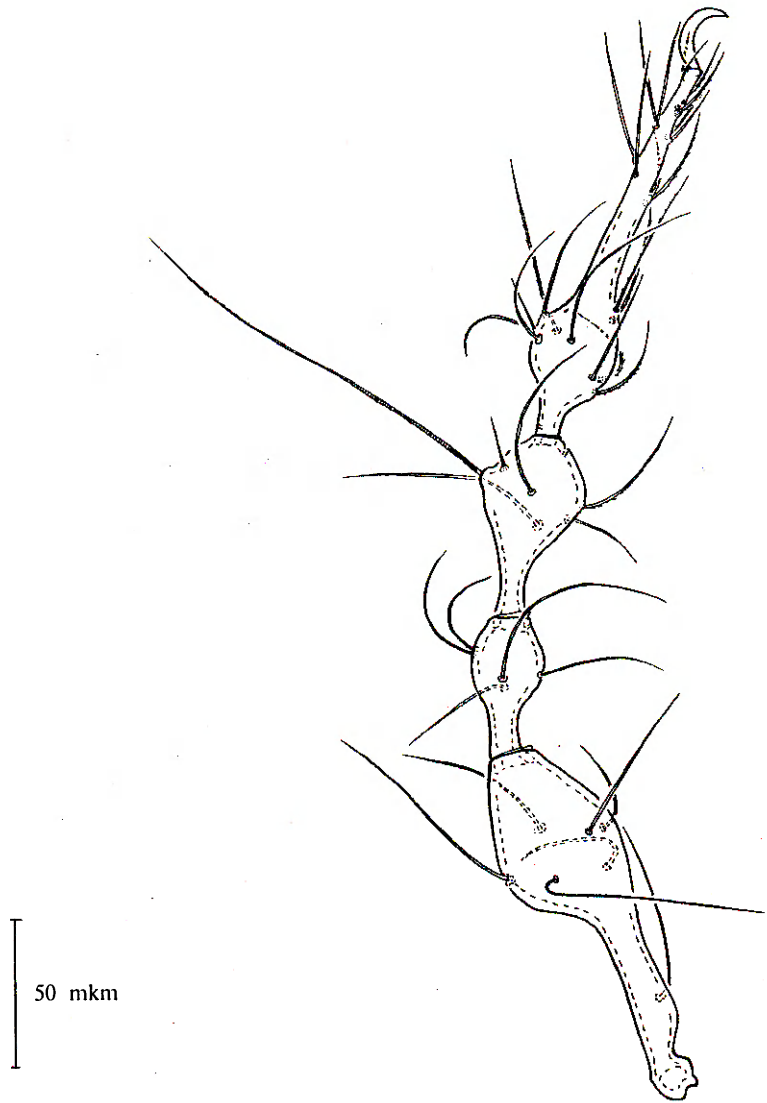


Fig.4. *Belba flammeisetosa*. Leg I.
Рис.4. *Belba flammeisetosa*. Нога I.

Damaeid Mite Fauna

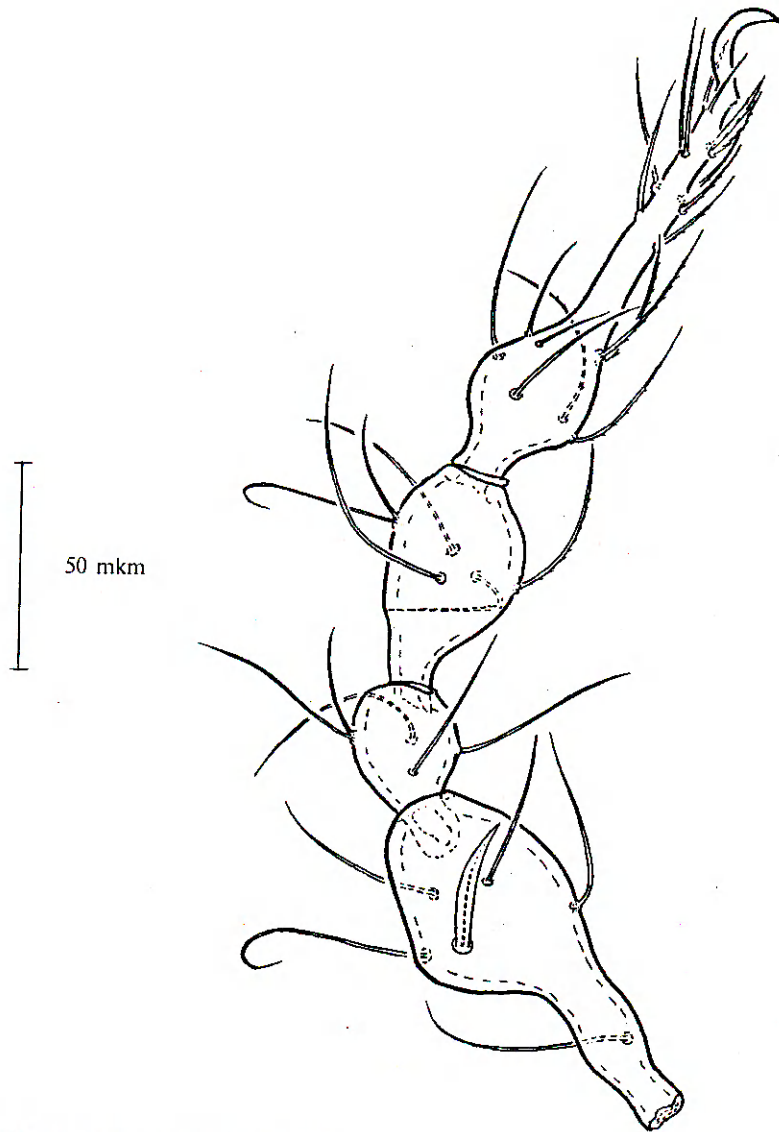
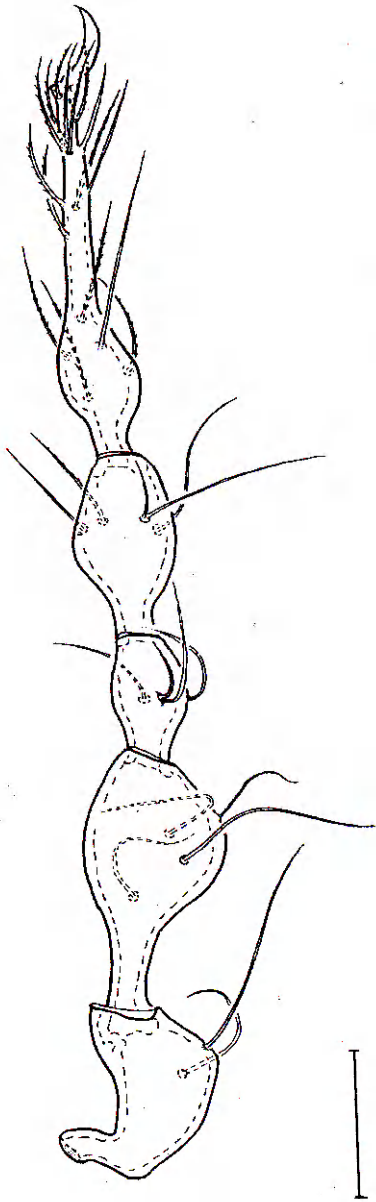
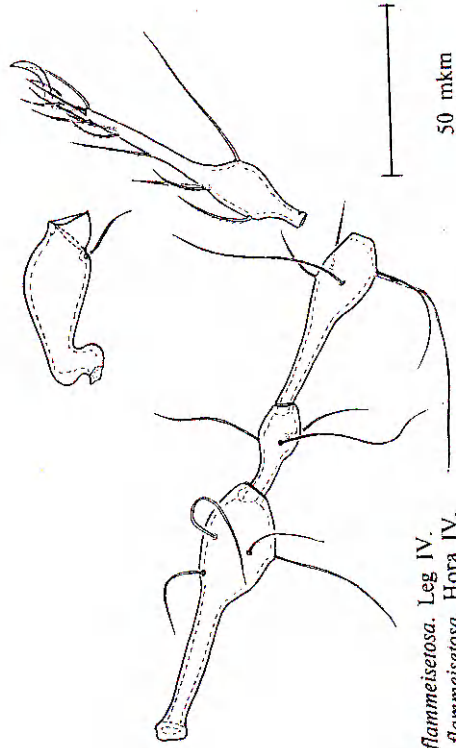


Fig.5. *Belba flammeisetosa*. Leg II.
Puc.5. *Belba flammeisetosa*. Hora II.



50 mkm

Fig.6. *Belba flammeisetosa*. Leg III.
Рис.6. *Belba flammeisetosa*. Нога III.



50 mkm

Fig.7. *Belba flammeisetosa*. Leg IV.
Рис.7. *Belba flammeisetosa*. Нога IV.

Damaeid Mite Fauna

IV 0.72 length of bulb. Setal formulae, I to IV, (famulus included, solenidia in parentheses): trochanters, 1-1-2-1 (a specimen with two setae on trochanter IV recorded: setae *pl'* present); femora, 7-6-4-4; genua, 4(1)-4(1)-3(1)-3; tibiae, 4(2)-5(1)-4(1)-4(1); tarsi, 20(2)-17(2)-16-13. Setae *v'* of femur II modified into spine.

ONTOGENY. Unknown.

MATERIAL EXAMINED. Holotype adult male: UZBEKISTAN: 1965, "Uchkhoz" (Collection of Zoological Museum of ISEA SO RAN, Novosibirsk). Any other data lost. Two other specimens of the species from B.-Z.'s collection: UZBEKISTAN, 23 August 1969, Ak-Daringel, vicinities of the collective farm "Fridrikh Engels" - 2; 27 May 1969 "Uchkhoz" - 1. Mites from S.Sharipov's collection: UZBEKISTAN: 19 June 1987, Shurkhak, *Juniperus seravschanica* soil litter - 4; 24 June 1987, Zinchob, Unabi, *J.seravschanica* soil litter - 5; 15 July 1987, river Tupalang basin. Shargun' settlement, *J.seravschanica* soil litter - 2. IPEE Collection (D.A.Krivolutsky): TADJIKISTAN: date and locality unknown. Coll.V.V.Khristov.

ETYMOLOGY. The species name "*flammeisetosa*" is taken from the Latin "flammeus, and "seta" referring to an unusual shape of the notogastral setae.

Belba sarvari sp.n.

Figs.8-10.

DIMENSIONS. Total ventral length of holotype male 434; notogastral maximum breadth 255.

INTEGUMENT. The color dark-yellow. Cerotegument subfilamentous. It covers body and legs completely except distal parts of tarsi.

PRODORSUM. Width at level of acetabulum II 0.62 notogastral width. Tubercles *Da* present; subtriangular. Propodolateral apophysis present; subtriangular. Setae *ro* (35), *le* (50), *in* (44), and *ex* (35) thin, smooth. Sensillus (78) thin, smooth, attenuate, tapering apical.

NOTOGASTER. Slightly ovate viewed perpendicular to circumgastric scissure, about 1.05 times longer than wide. Notogastral setae very thin, hair-like, attenuate, smooth, directed posteriorly, of equal length (34).

VENTRAL REGION. Tubercles *Va* and *Vp* (bearing setae *3b*) evenly rounded. Sejugal apophyses: *sa* - long, spine-like; *sp* - evenly rounded. Discidium (*di*) present, subtriangular. Coxisternal setation 3-1-3-4.

GNATHOSOMA. Normal for the genus.

LEGS (tibia and tarsi IV studied but lost after remounting of the holotype specimen): Relative length (I to IV): 1 : 0.85 : 0.95 : 1.25. Leg IV 1.15 ventral body length. Femur IV 1.14 times length trochanter IV. Proximal stalk of

A.V.Tolstikov

femur IV 0.75 length of bulb. Setal formulae, I to IV (famulus included, solenidia in parentheses): trochanters, 1-1-2-1; femora, 7-6-4-4; genua 4(1)-4(1)-3(1)-3; tibia 4(2)-5(1)-4(1)-4(1); tarsi 20(2)-17(2)-16-13. Setae v' of femur II modified into slender spine.

Leg segment measurements:

	I	II	III	IV
Tr			59	81
Fe	120	91	75	72
Ge	37	39	39	46
Ti	62	52	56	89
Ta	127	107	120	179

ONTOGENY. Unknown.

MATERIAL EXAMINED. One holotype male: UZBEKISTAN: 23 July 1987, Surkhandarya Province, mountain pass Anzob. 3300 m.a.s.l. Alpine meadow. 0-5 cm. Coll.S.Sharipov (Univ.of Tashkent).

ETYMOLOGY. The species is named after Mr. Sarvar Sharipov, deceased Uzbek acarologist, who collected the mite.

ACKNOWLEDGEMENTS

The author thanks Prof. Dr. R.A. Norton (S.U.N.Y. College of Environmental Science and Forestry, Syracuse, USA), and Dr. A.D. Petrova-Nikitina (M.S.U. Department of Entomology, Moscow) for very helpful discussions; Prof. Dr. D.A. Krivolutsky (Institute for Problems of Ecology and Evolution, Moscow), Dr. L.G. Grishina (Institute for Animal Systematics and Ecology, Novosibirsk), and Dr. A. A. Lyashchev (Tyumen Agricultural Academy, Tyumen), for the opportunity to work with the collections.

Partially the research has been supported by the grant "Taxonomy of insects and mites" (The Program "Universities of Russia").

Damaeid Mite Fauna

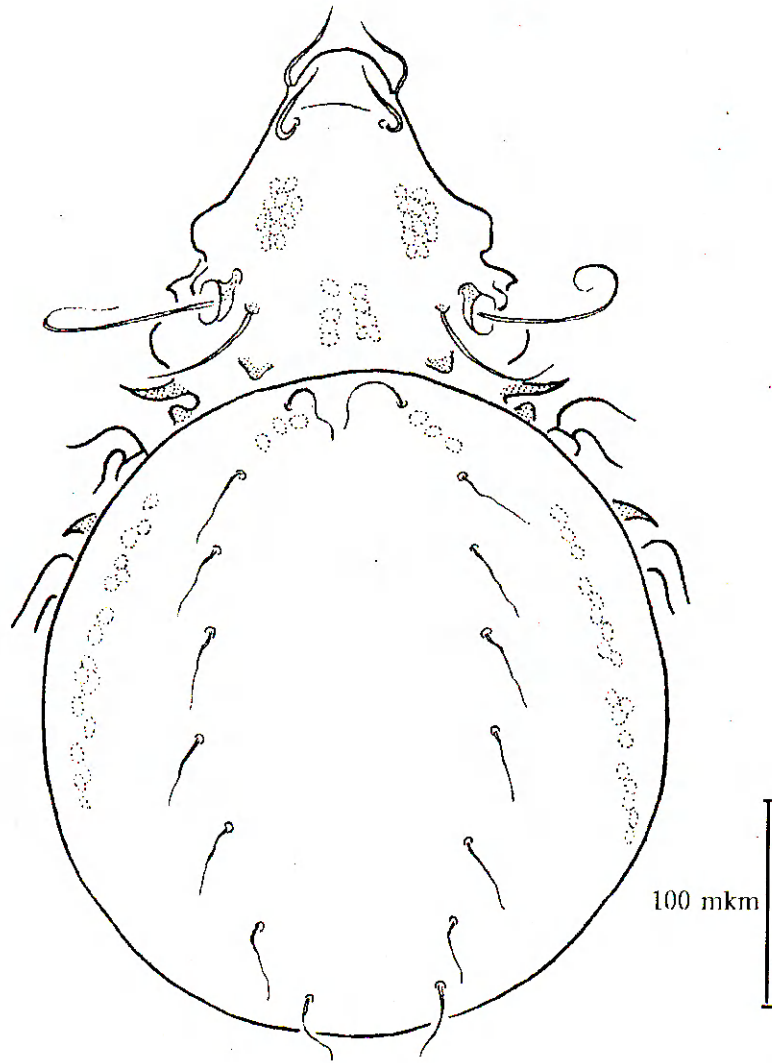


Fig.8. *Belba sarvari*. Dorsal aspect.
Рис.8. *Belba sarvari*. Вид сверху.

A.V.Tolstikov

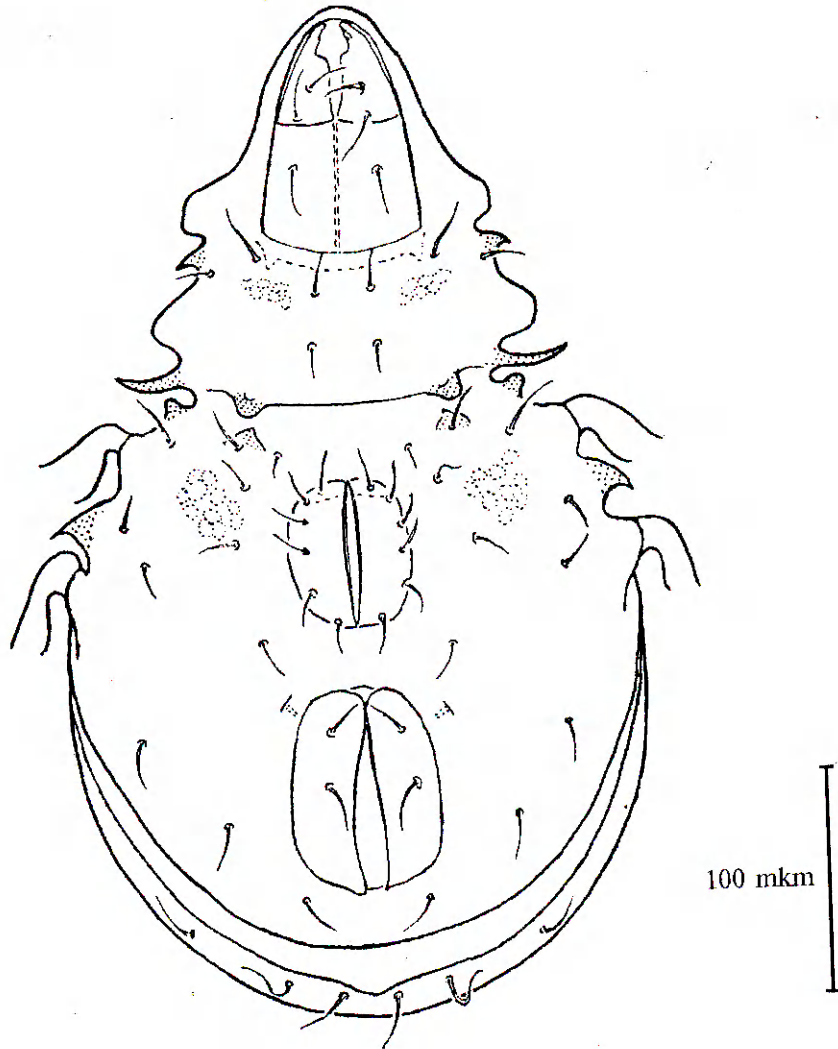


Fig.9. *Belba sarvari*. Ventral aspect.
Рис.9. *Belba sarvari*. Вид снизу.

Damaeid Mite Fauna

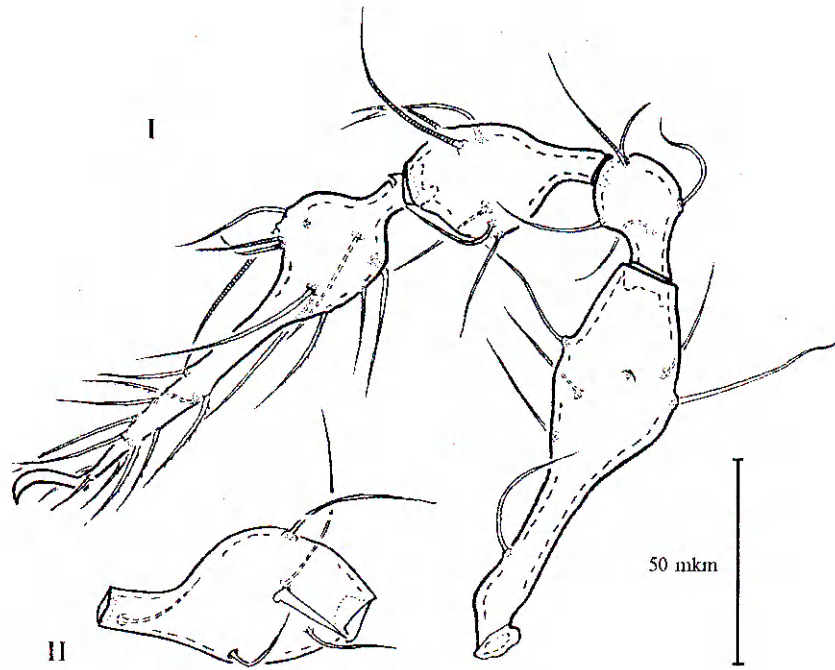


Fig.10. *Belba sarvari*. I — leg I, II — femur II.
Рис.10. *Belba sarvari*. I — нога I, II — бедро II.